



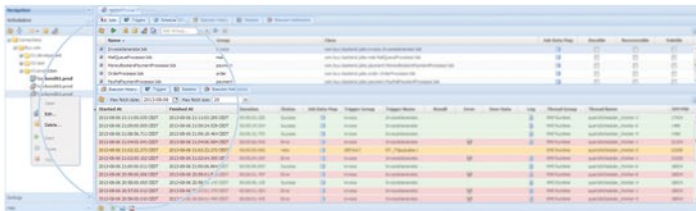
Do you know what your Quartz jobs did today? Yesterday? A year ago?
Do you need to ad-hoc execute a Quartz job outside of its regular schedule?
Do you want to be automatically notified whenever a Quartz job execution fails?

INTRODUCING QUARTZDESK: A HIGHLY FLEXIBLE ENTERPRISE-CLASS MANAGEMENT AND MONITORING PLATFORM FOR QUARTZ SCHEDULERS EMBEDDED IN JAVA APPLICATIONS

Features

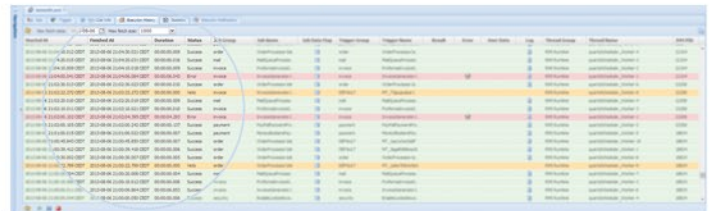
Manage Your Schedulers

- Support for all Quartz scheduler versions from Quartz 1.8.6 up to the latest version (2.2.1 as the date of writing).
- Easily set up remote Quartz scheduler connections using various JMX protocols (JMX/RMI, JMXMP, REMOTING-JMX).
- Pause/resume/stop Quartz schedulers embedded in your applications.



View Execution History

- Available for individual jobs as well as their triggers.
- Uses persistent store with collected data available for later analysis and audits.
- 30+ runtime parameters are recorded for each job execution, including intercepted job execution log messages (available for Log4j, Log4j2, Logback and Java Utility Logging frameworks).



Manage Your Jobs & Triggers

- Add/edit/delete/clone jobs and triggers using an intuitive GUI. All Quartz trigger types are supported.
- Pause and resume job and trigger groups.
- Ad-hoc execute individual jobs outside of their regular scheduled times.
- View and interrupt all currently executing jobs and inspect their logs on the fly.



Analyze Execution Statistics

- Access 12 types of interactive job and trigger execution statistics.
- View global statistics, or statistics for individual jobs and triggers.
- Detect and analyze problems related to job execution, including temporary and persistent failures and performance degradation.
- Identify worst performing jobs and triggers, failure patterns, etc.
- Export charts in SVG, PNG and JPG formats.





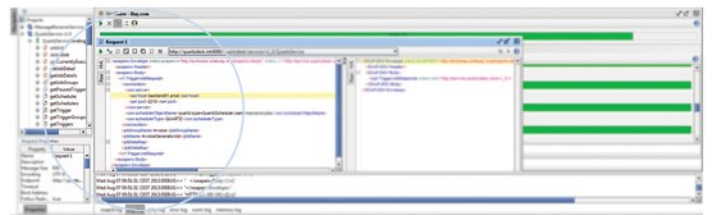
Features

Monitor Schedulers, Jobs & Triggers

- Poll-based REST API to monitor schedulers, jobs and triggers. The REST API can be easily plugged to all popular IT Infrastructure Monitoring systems such as Nagios, Zabbix, Cacti etc.
- Push-based and scriptable (JavaScript) execution notification rules for arbitrary monitoring logic that may, for example, perform analysis of the intercepted job execution log data.
- Push-based notifications can be sent as instant messages (AIM, GTalk, ICQ, Jabber/XMPP, Yahoo), emails, SNMP Traps, or passed as SOAP messages routed to configured web-service endpoints.



- Works for all supported Quartz scheduler versions while abstracting away all the fundamental Quartz API version differences.



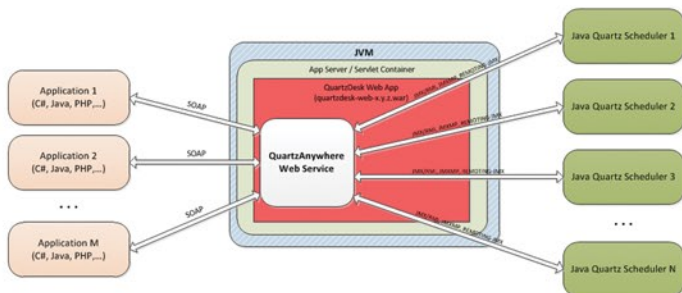
Totally Non-Obtrusive Solution

- To use QuartzDesk, you need only adjust JVM and application configurations. In most cases, no application code changes are required.

Flexible Licensing Model

- Per-deployment based licensing model.
- QuartzDesk is available in 3 editions – Lite (free), Standard and Enterprise.
- 30-day free trial licenses for Standard and Enterprise editions are available on our website.
- Standard and Enterprise edition licenses come with 12 months of Software Maintenance that includes unlimited technical support and product upgrades.
- License renewals are optional. Once the active Software Maintenance expires the product remains fully functional.
- OEM licenses are available for customers that wish to integrate, rebrand and distribute QuartzDesk as a part of their own product offering.
- Interesting quantity discounts and special offers are available upon request.

QuartzAnywhere Web-Service



- QuartzAnywhere is a SOAP-based web-service that exposes 30+ management and monitoring operations you can invoke on remote Quartz schedulers.
- Easy to use high-level API suitable for applications that need the capability to dynamically schedule new jobs in addition to modifying existing jobs and their triggers.

For a comprehensive description of all QuartzDesk features, please visit www.quartzdesk.com/documentation/features.





Supported Platforms

JAVA

JDK 1.6, 1.7 (Oracle, IBM, OpenJDK)

Application Servers



Oracle GlassFish Oracle WebLogic RedHat JBoss
IBM WebSphere Apache Tomcat

Databases

DB2
H2
Microsoft SQL Server
MySQL
Oracle
PostgreSQL

Operating Systems

Windows
Unix/Linux

For a detailed list of all supported platforms, please visit www.quartzdesk.com/documentation/supported-platforms.

Our Customers



For further information, please visit our website at www.quartzdesk.com or email us at sales@quartzdesk.com.

